

Between near neighbours and distant friends

The Gelderland strategy for cooperation in Europe



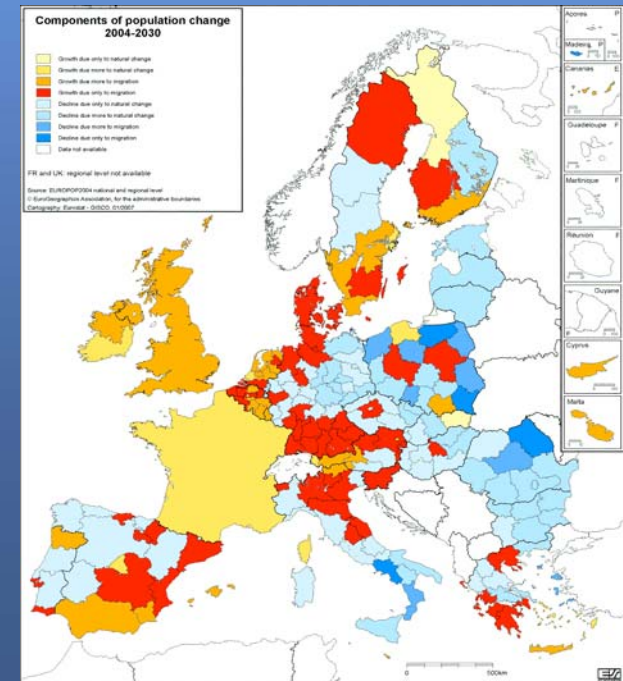
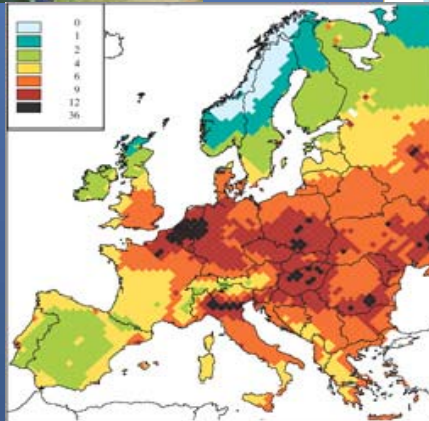
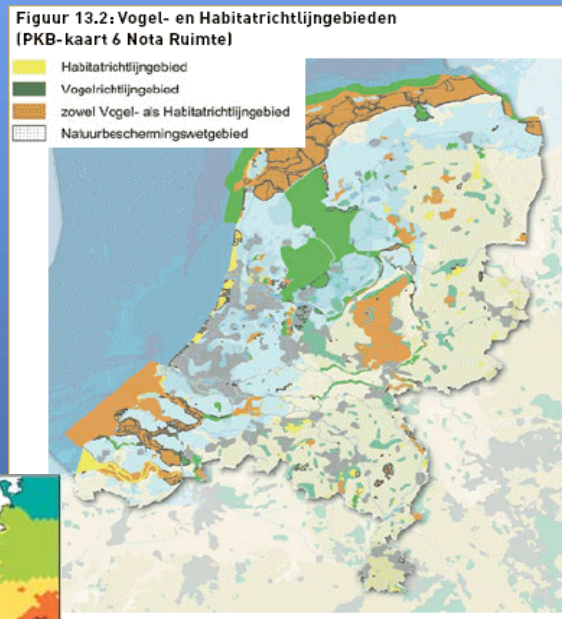
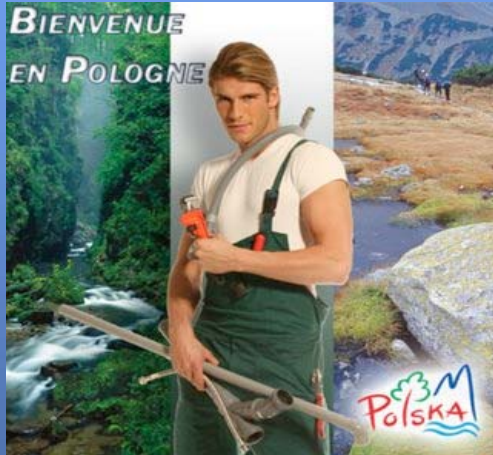
Why is Europe Important to Gelderland (1)

- Gelderland as a region in a cooperative Europe following World War Two
 - A contribution to peace and security by being a reliable cooperation partner across the borders.
 - Support to Polish liberators via assistance to and now twinning with Lubelskie



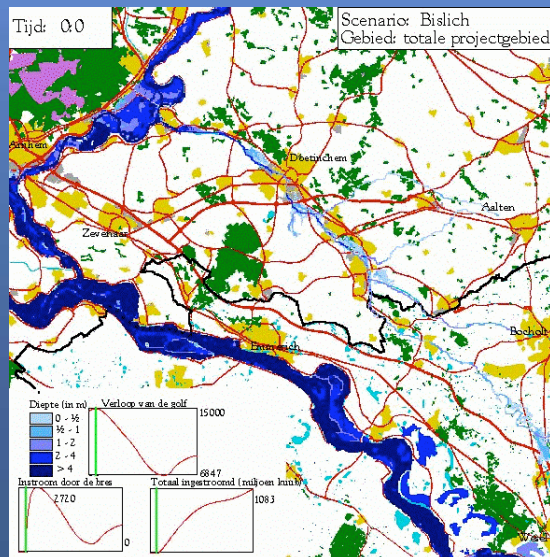
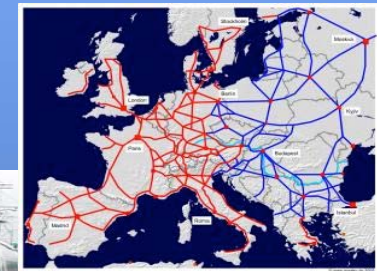
Why is Europe important to Gelderland (2)

- Gelderland as a region in the European Union
 - European regulation influences policy making in Gelderland
 - Gelderland is part of the developments in Europe



Why is Europe important to Gelderland (3)

- The location of Gelderland as a border region leads to automatic links with North Rhine-Westphalia, e.g.
 - Water (quantity and quality, safety)
 - Traffic and Transport
 - Economy
 - The Environment

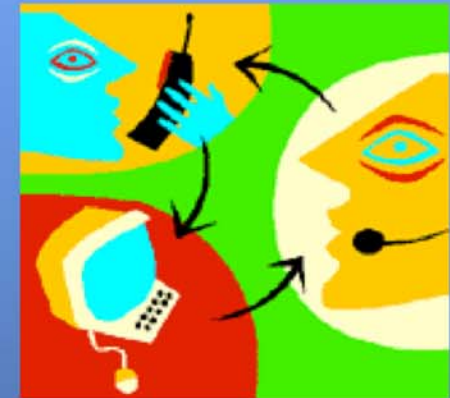


Why is Europe important to Gelderland (4)

- International cooperation is unavoidable, but how should it be achieved?

Objectives and methods from 'Between near neighbours and distant friends'

- **Influence discussions applicable in relevant policy areas**
 - lobbying
 - networking
- **Search for knowledge and expertise**
 - networking
 - projects
- **Participate in available funding**
 - programmes
 - projects



Method: lobbying (1)



- **Select regional subjects linked to the working programme of the European Commission**
 - Parliament Statement priority files
 - Cooperation with other provinces (IPO/HNP)
- **Play a role in the Committee of the Regions**
 - COTER committee
 - Plenary meetings
 - Specific working groups and political delegations
 - Contacts with members of the European Parliament
- **Establish contacts with policy makers in Brussels and NRW**
 - HNP



Method: lobbying (2)



- **Use informal contacts inside or outside the political area**
 - Europe spokespersons in the parliament
 - Holders of relevant portfolios in the parliament
 - MEPs



- **Use the administrative relationship with NRW to promote shared interests in Brussels**



Method: networking



Participate in networks to hear and be heard

- Association of European Regions
- Association of European Border Regions
- Via IPO: Council of European municipalities and regions / CEMR
- UITP (WVV – Public Transport)
- SEN@ER (Population and Ageing)
- Partenalia (Urban development)
- Encore (European environmental collaboration)
- **Present yourself at meetings in Europe: ensure that your region is selected by others as a partner for projects!**
 - Still only incidental



Method: projects



Participate in international projects



- Viking (flood protection)
- Boundless Parks
- X-border GDI (geodata infrastructure)



- Change on Borders
 - Rhine cycle path
 - Master in cross-border water management RU

- Optimum 2 (traffic management)



- Urbact (Hous-Es)
- Fast Track Urbact II

Example: Gelderland urban development programme (partners)

- 4 larger cities (100.000+ inhabitants)
Arnhem (capitol), Apeldoorn, Ede, Nijmegen
- 4 smaller cities (40.000 – 60.000 inhabitants)
Doetinchem, Harderwijk, Tiel, Zutphen
- Province of Gelderland
Funding Urban Development Programme
2001-2007: € 150 mln.
2007-2011: € 95 mln.

Example: Gelderland urban development programme (focal points)

- Working on quality of urban development
- Improving the social and cultural infrastructure
- Strengthening the urban economy

Example: Gelderland urban development programme (objectives in Europe)

- Sharing knowledge and best practices
- Find practical solutions for urban problems
- Search for European partners to challenge:
 - Focal points Gelderland Urban Development Policy (general)
 - Specific themes: integration, domestic violence, cities and water, innovation

Method: programmes (1)



▪ Objective 2: GO



- Gelderland and Overijssel invest in innovation
- 14 February 2008: Provinces and Central Government sign covenant
- Over the next 7 years, investment of more than €360 million in the economic development of the Eastern Netherlands, of which € 164 million EU budget

Method: programmes (2)



- Interreg IV A 2007-2013
- Border regions build for Europe
- Scope 294 million euro, of which €138 million EU budget
- EU to support Dutch-German projects to the tune of 138 million euro
- Gelderland is partner



Near neighbours: North Rhine-Westphalia

- Take cooperation seriously



- Professionalisation and monitoring via a working programme
- Focus on political decision makers, not implementers
- Bring the 'decision makers' (executive members) into contact, in their own specialist fields
- Work together with your national neighbours in Limburg and Overijssel '3+3'



Working programme South-Eastern Netherlands - North Rhine-Westphalia 2008 – 2013 (1)

- Areas for attention:
 - Administrative cooperation, Europe, public order and safety
 - Spatial planning and geodata infrastructure
 - The environment
 - Nature and landscape, water management
 - Mobility and infrastructure
 - Economy, innovation, education, research and sciences
 - Culture



Working programme South-Eastern Netherlands - North Rhine-Westphalia 2008 – 2013 (2)

Decision making and implementation

- Tie-in with existing/regular consultation between decision makers
- Overview and coordination in '3+3' (Queen's Commissioners and RPs)
- Cooperation with partners, national and transnational

Implementation assisted by Interreg IV A

- Available to both parties: make money through money

Also for cities: example: Citynet Rhein-Waal project



Cities and cross-border cooperation

- How to involve cities?
 - Cities have to get to know other cities
 - Realise or facilitate meetings at the political level
 - Participate together in European networks
 - Make money available

Distant friends: twinning with Lubelskie

- Subsidy programme 1993 - 2007
- Start of twinning in 2008
 - Exchange on priority themes
 - Support for development of Sobibor
 - Administrative contacts



Between near neighbours and distant friends

The Gelderland strategy for cooperation in Europe

